

RECRUITMENTS

The program is open to students enrolled in any of the 4 graduate schools: Natural Science and Technology, Medical Sciences, Advanced Preventive Medical Sciences, and Frontier Science Initiative.

Please go to the website for the selection process.
<https://nano-wise.w3.kanazawa-u.ac.jp/en/support#recruitment>



SUPPORT



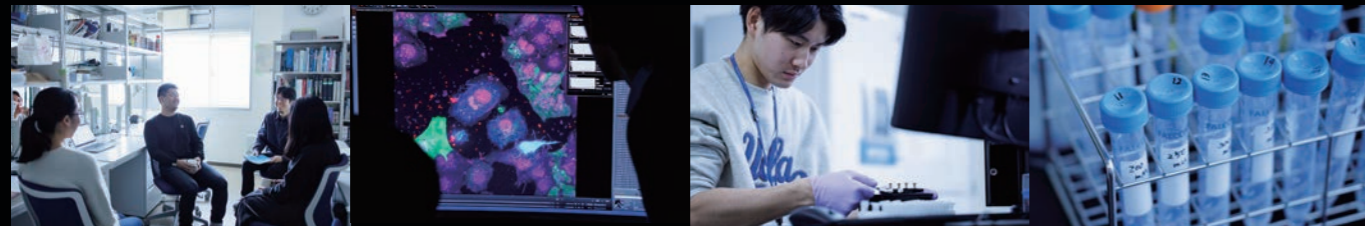
This Program will provide the following substantial financial support to students in the Program.

- ① Full exemption of entrance fee and tuition fee
- ② Benefit-type grant for living expenses
- ③ Research funds
- ④ Research Assistant salary
- ⑤ Research travel expenses

Implementation system and partner organizations

Kanazawa University	Overseas TOP Universities	Private company
Graduate School of Natural Science and Technology Graduate School of Medical Sciences Graduate School of Advanced Preventive Medical Sciences Graduate School of Frontier Science Initiative	 Imperial College London  University of British Columbia	         

We are looking forward to participation of universities, research institutes, private enterprises for the sustainable development of human resources development / exchange and the creation of new joint research.



Mankind Awaits The Changes You Will Make.



WISE Program for
ERACHANGER

INQUIRIES

Please direct all inquiries to the WISE Promotion Office, Kanazawa University
 WISE Promotion Office, Kakuma Campus, Kanazawa, Ishikawa Prefecture 920-1192
 E-mail : wise-ku[at]adm.kanazawa-u.ac.jp *Please replace [at] with @.
 Web : nano-wise.w3.kanazawa-u.ac.jp/en



ERA WATCHER? or ERA CHANGER?

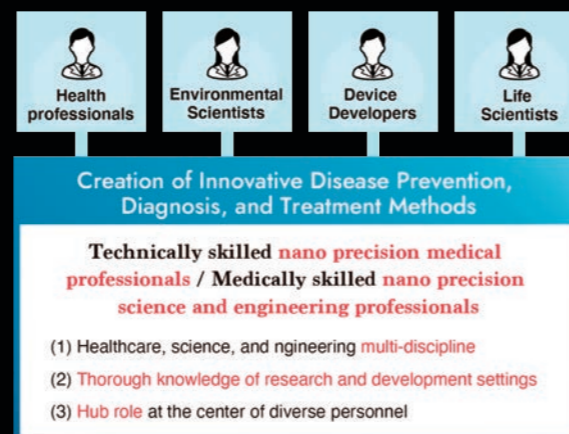
Getting used to the changes is a good option. But there is another one. "Making the changes". Today, the world might need someone to make the changes. Mankind.. The world.. Are we saying too much? ..We are not. With the knowledge and skills you can acquire in this program, You may help the people who's facing a variety of social issues. With our the state of the art education and technology, You may make innovation happen for the health of mankind. We hope that someday people from this program will make the changes. The changes that mankind awaits and they all start from here.

What is the WISE Program? (Doctoral Program for World-leading Innovative & Smart Education)

The WISE program aims to foster Ph.D. personnel (high-level 'knowledge professionals') who will undertake the challenge of bringing about innovation in the society. The program incorporates organizational partnerships with external bodies such as universities, research institutions, and private enterprises located in Japan as well as other countries to distill the highest global standard of education and research ability into a five-year integrated master's and doctoral course (including a four-year doctoral course) degree program.

PROGRAM

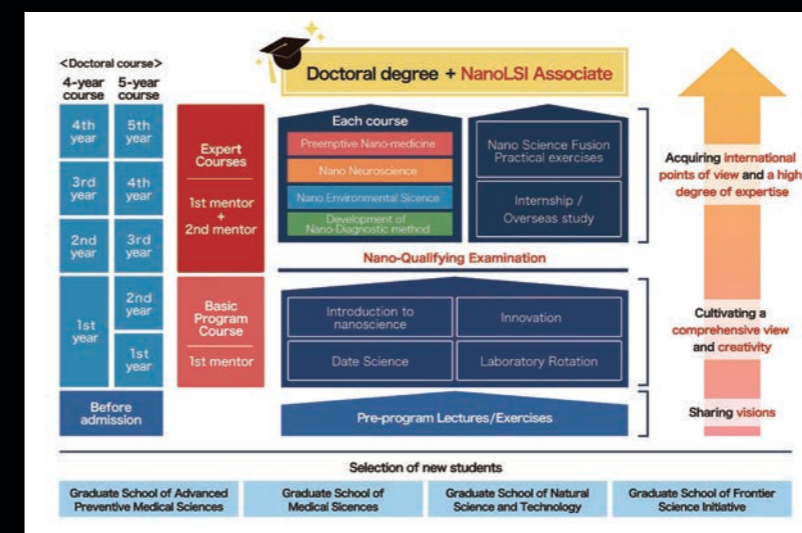
This program will make full use of the research environment and achievements of the World Premier International Research Center Initiative (WPI) Nano Life Science Institute, where we are proud to have world-class researchers, and apply cutting-edge nano-analysis technology to medicine. By learning how to apply cutting-edge nano-analysis technology to medicine, science, and engineering, we will develop outstanding doctoral human resources who can bring about innovations to build a foundation for human health.



CURRICULUM

The curriculum of this program fosters the qualities of big-picture thinking and developing creativity regarding nanoscience in the students. It consists of a Basic Program Course and Expert Courses to develop an international outlook and high levels of expertise in the students. The students enrolled in this course are required to earn compulsory subjects from the Basic Program Course and Expert Courses. They are also required to earn the credits prescribed by their affiliated research department, defend their doctoral theses, and pass the final examination.

SCHEDULE



Basic Program Course

After enrolling in this program, students will first study the basic subjects of the Basic Program Course such as "Introduction to Nanoscience," before selecting a specific expert course. Next, a Nano-Qualifying Examination, which consists of a written test and an oral interview, is conducted to evaluate whether the students have acquired the basic knowledge about nano medicine and nano science/engineering. Only the students who pass the examination may proceed to the expert courses.

Expert Courses

Students may select one of four expert courses: "Preemptive Nano-medicine," "Nano Neuroscience," "Nano Environmental Science," and "Development of Nano-Diagnostic method." The courses are not conducted solely by the program leaders from the course-operating affiliated research departments, but also involve instruction by leaders from other research departments, other universities, and businesses, to provide a diverse education to students. Students are offered time and space to mature as "knowledge professionals," while receiving guidance from a primary mentor from their affiliated research department and a secondary mentor from their affiliated expert course.